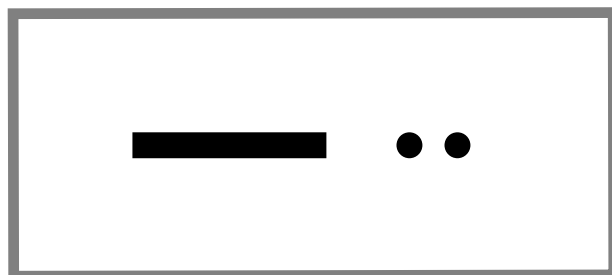
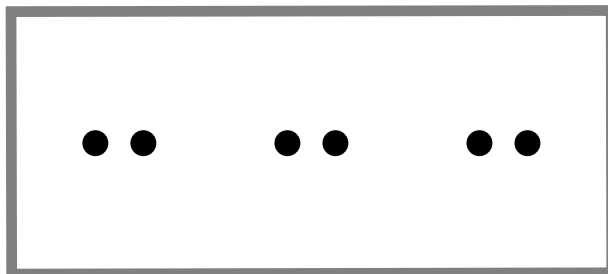
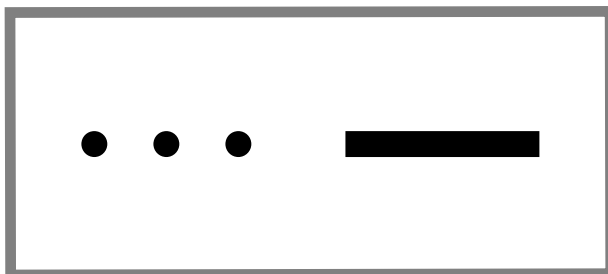
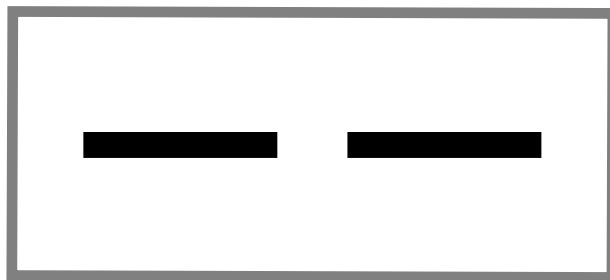


# Leuchtturm- Geschichten

kurzer Ton • langer Ton **————**

Wie blinkt  
der Leuchtturm ?



Die ersten Noten !!! Nimm den Daumen !

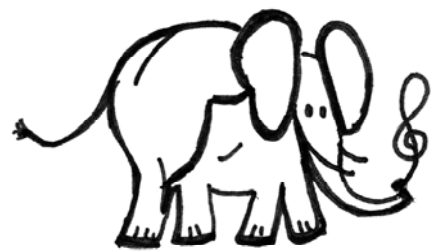
## Note c

Musical notation for 'Note c' in 4/4 time. The melody is on a treble clef staff, and the accompaniment is on a bass clef staff. The melody consists of eight quarter notes: C4, D4, E4, F4, G4, A4, B4, and C5. The lyrics are: Kin - der hört nur, kur - ze No - ten. The accompaniment consists of eight quarter notes, each marked with an 'x' on the bass clef staff, indicating a rhythmic pattern on a xylophone.

Klanghölzer

## Elefantenrüssellied

Musical notation for the first line of the 'Elefantenrüssellied' in 4/4 time. The melody is on a treble clef staff. The notes are: C4, D4, E4, F4, G4, A4, B4, and C5. The lyrics are: E - le - fan - ten ha - ben Rüs - sel.



Musical notation for the second line of the 'Elefantenrüssellied' in 4/4 time. The melody is on a treble clef staff. The notes are: C4, D4, E4, F4, G4, A4, B4, and C5. The lyrics are: No - ten brau - chen No - ten - schlüs - sel.

Tipp: Wo atmest du im Elefantenrüssellied ?  
Zeichne deine Atemzeichen in das Lied ein. ( v )



## Zwei Noten und zwei Eulen

4

Im - mer Mon - tags um halb sie - ben,

A musical staff in treble clef with a 4/4 time signature. It contains eight quarter notes: G4, A4, B4, C5, G4, F4, E4, and D4. The lyrics are written below the notes.

tref - fen sich die Eu - len drü - ben

A musical staff in treble clef containing eight quarter notes: G4, A4, B4, C5, G4, F4, E4, and D4. The lyrics are written below the notes.

# Mama Pingu



Melodika 1

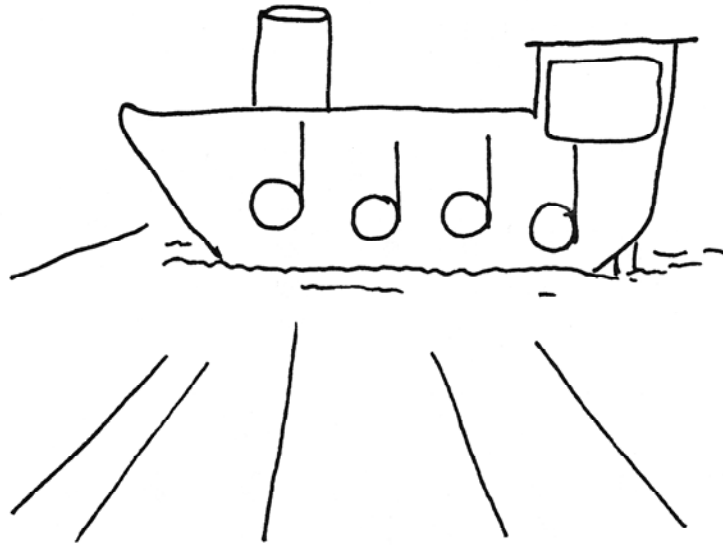
Musical notation for two melodica parts. The top staff is labeled 'Melodika 1' and the bottom staff is labeled 'Melodika 2'. Both staves are in 4/4 time, indicated by a '4' in a circle at the beginning of each staff. The melody consists of quarter notes. The lyrics are written below the notes.

Ma-ma Pin-gu ruft zu Ti-sche, heu-te gibt es kei-ne Fi-sche

Melodika 2

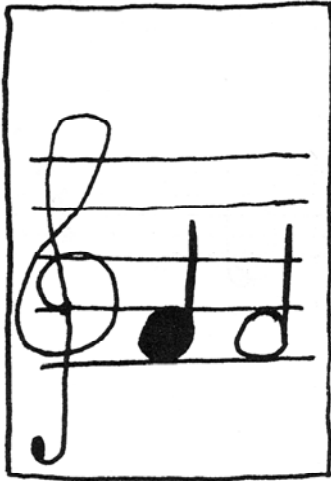
# Alles anders

Der Dampfer gibt Töne.  
Zweischlagnoten.

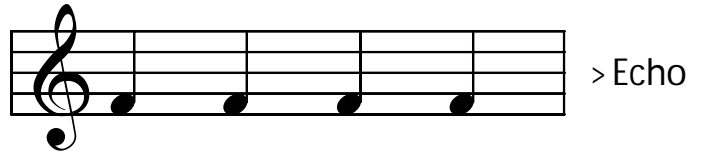
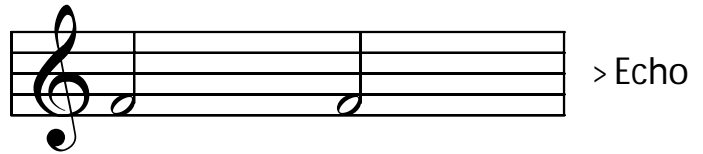
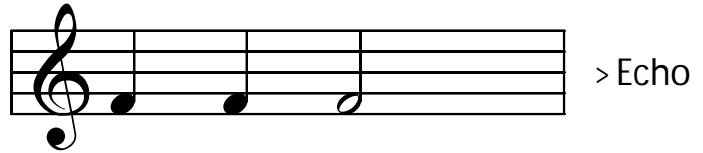
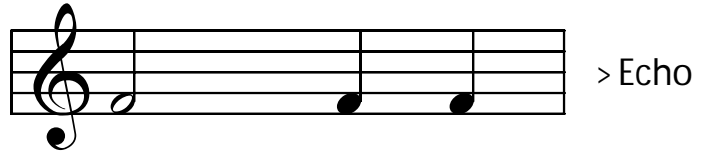


# Die neue Note f

Die Note, die du hier siehst heisst f. Die Note f ist zwischen zwei Notenlinien. Es sind die untersten zwei Notenlinien.



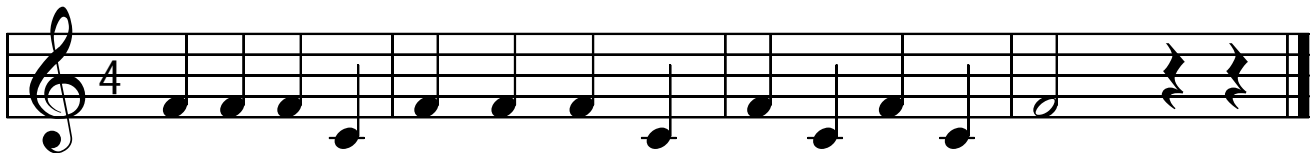
## Echospiel - einzelne Motive ein Spieler spielt vor - alle spielen nach



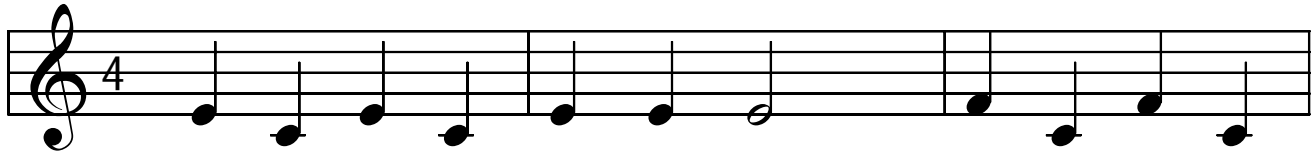
Tipp:

- jedes Kind darf der Vorspieler sein
- möchte jemand auch zwei Takte vorspielen ?

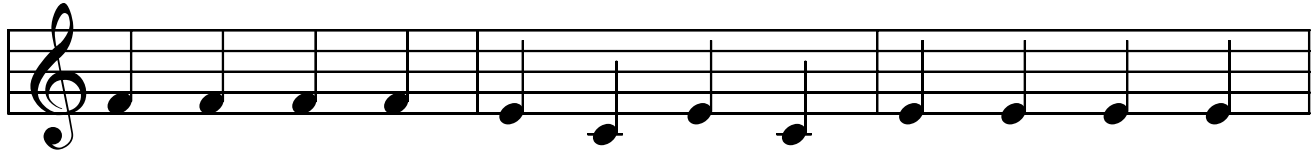
## Der Trompeter



# Tanzen

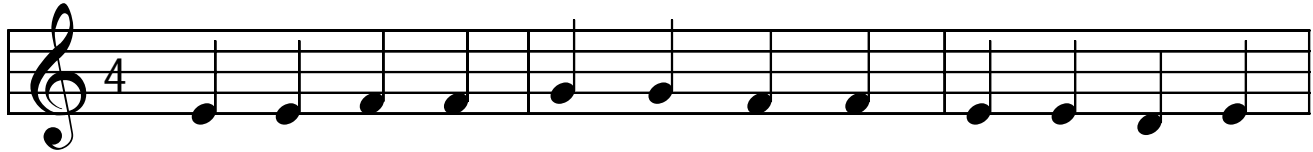


Tan - zen mag das Nas - horn Ruth, fin - det dei - ne

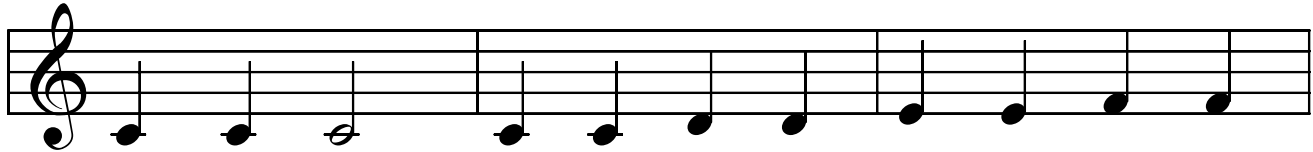


Lie - der gut zum flot - ten Spiel klatscht Ruth da - zu und

# Mein Freund Tobi



Kurz vor vier kommt mein Freund To - bi und wir woll'n ins

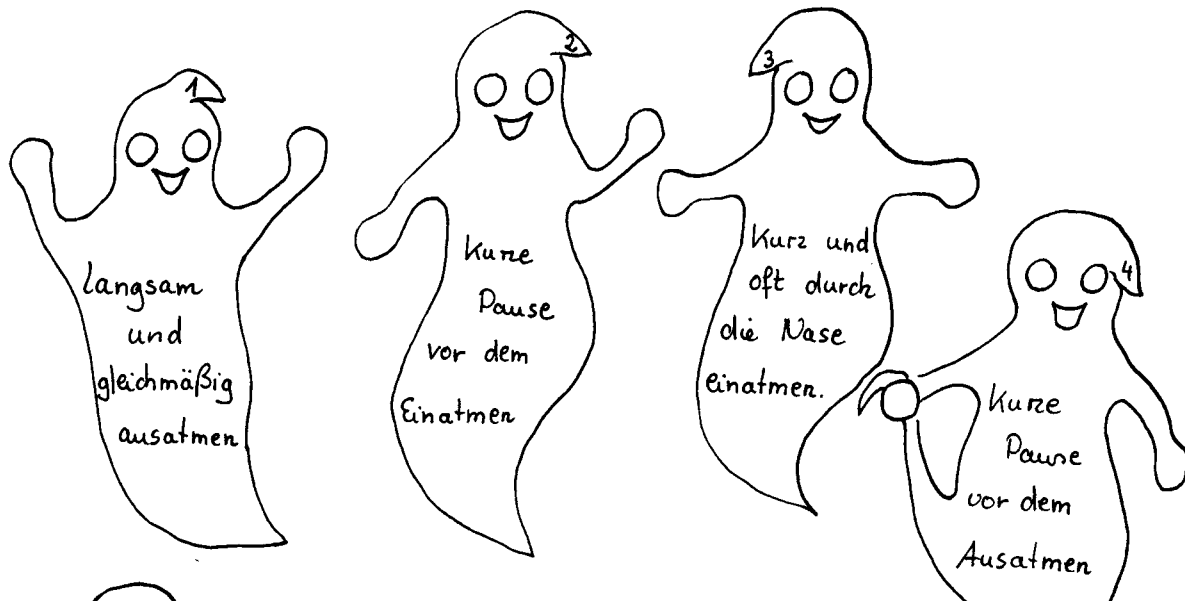


Schwimm - bad gehn', dann kann To - bi end - lich mei - nen



# Luftig und gespenstisch...

Atemspiele



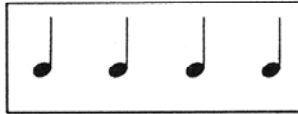
Klatschen



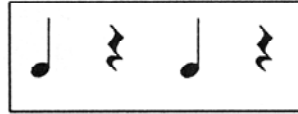
Patschen



Gehen



Schnipsen



Tipp:

- jedes Kind übernimmt eine Bewegung und ein Motiv
- interessant klingt es, wenn mehrere Motive gleichzeitig zu hören sind.

## Easy Lessons

