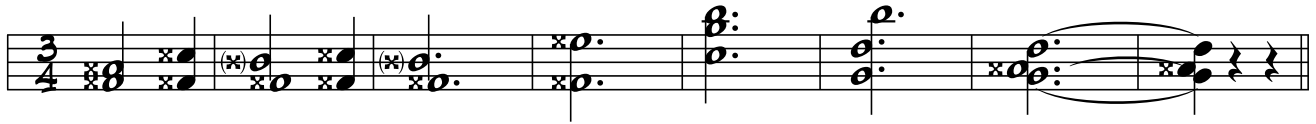


# Walzerglück mit der Harmonika

Komposition & Griffschr.: Michael Rettig



C c c B c c C c c H h h A a a B b b B A G <sup>b</sup>  
B



B b b A b b B b b A b b B b b A b b A b b



B b b A b b B b b A b b B b b A b b B b b



B b b A b b B b b A b b B b b A b b B b b

# Unsre oide Kath

Zwiefacher aus Franken

Bearb. & Griffschr.: Michael Rettig

C c c B b b B b B b B b b B b

B b b A b b B b B b B b b

# Fuhrmannslied

5

Stammtischlied aus Österreich

Bearb. & Griffschr.: Michael Rettig

Musical notation for the first staff of the piece, featuring a treble clef, a 2/4 time signature, and various notes and rests. Some notes are marked with an 'x'.

A b      B b      A b B b      B F A G B      <sup>b</sup>B      B b A b      B b A b

Musical notation for the second staff of the piece, featuring a treble clef, a 2/4 time signature, and various notes and rests. Some notes are marked with an 'x'.

B b A b      A b B b      A b B b      A b B b      B b H b      F b A b

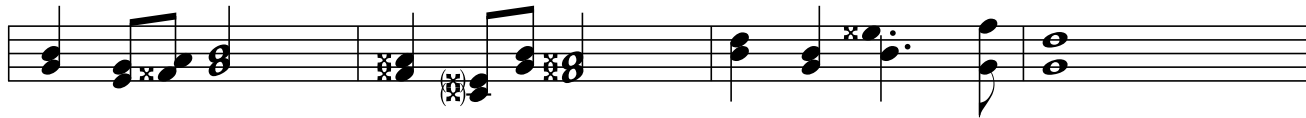
# Heut' geht es an Bord

Seemannslied

Bearb. & Griffschr.: Michael Rettig



B b A b B b A b C c B c C c B c A b B b A b B b B b A G B <sup>b</sup> B



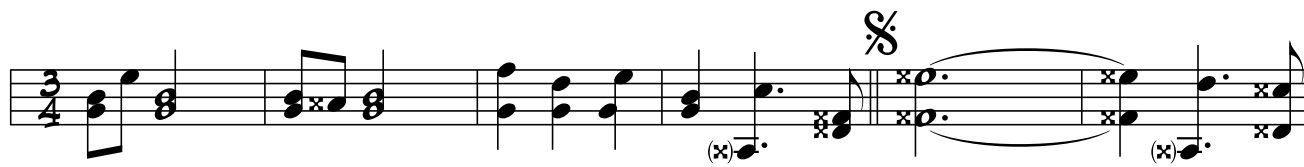
<sup>b</sup> B <sup>b</sup> B <sup>b</sup> B <sup>b</sup> B c C c C <sup>b</sup> B <sup>b</sup> B <sup>b</sup> B <sup>b</sup> B <sup>b</sup> B <sup>b</sup> B

# Wiener Blut

7


Komponist: Johann Strauss (Sohn)

Bearb. & Griffschr.: Michael Rettig



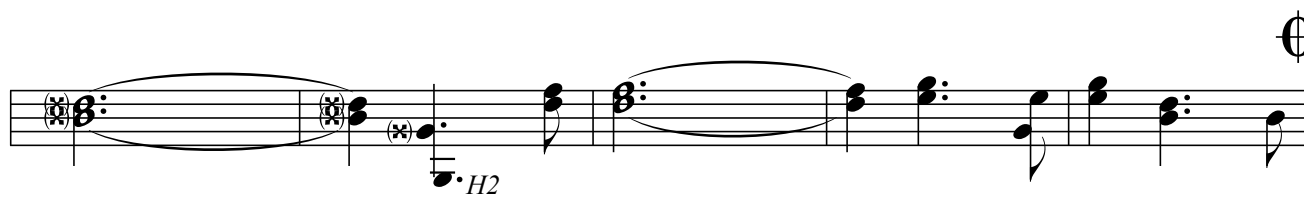
Musical staff 1 in 3/4 time, featuring a treble clef and a key signature of two flats. The staff contains a sequence of chords and melodic lines. A double bar line with a repeat sign is present. Some notes are marked with an 'x' in a circle. A fermata is placed over the final two notes of the staff.

b B    b B    b B    b B    b B    C c c    B c c



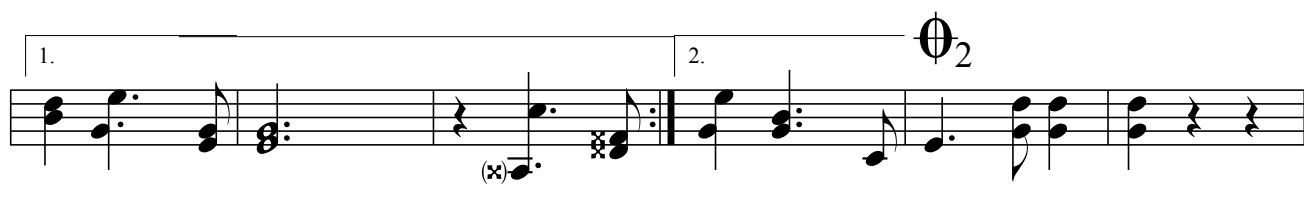
Musical staff 2 in 3/4 time, featuring a bass clef. The staff contains a sequence of chords and melodic lines. A fermata is placed over the first two notes. The staff ends with a double bar line and a half note marked 'HI'.

B b b    A b b    B b b    G b b    A b b    B b b



Musical staff 3 in 3/4 time, featuring a bass clef. The staff contains a sequence of chords and melodic lines. A fermata is placed over the first two notes. A double bar line with a repeat sign is present. The staff ends with a double bar line and a half note marked 'H2'.

E e e    F e e    B b b    A b b    B b b



Musical staff 4 in 3/4 time, featuring a bass clef. The staff contains two first endings, labeled '1.' and '2.'. A fermata is placed over the final note of the second ending. A double bar line with a repeat sign is present. The staff ends with a double bar line and a half note marked 'H2'.

A b b    B b b    B    A b b    B A G    b B

# Backwater Blues

Blues

Komposition: Bessie Smith

Bearb. & Griffschr.: Michael Rettig



c c c c    g g b b    b b b b    b b b b  
 C C C C    G G B B    B B B B    B B B B

g g g g    g g b b    b b b b    b b b b  
 G G G G    G G B B    B B B B    B B B B

b b b b    g g b b    b b b b    b b b b  
 B B B B    G G B B    B B B B    B B B B

b b b b    c c c c    g g b b  
 B B B B    C C C C    G G B B

# The Irish Washerwoman

Irish Folk (Jig)

Bearb. & Griffschr.: Michael Rettig



X A a X a



A a X a F f G f F f A a A a X a A a X a

# This little light of mine

Gospelsong

Bearb. & Griffschr.: Michael Rettig

A a X a B b A b B b C c B b B<sup>b</sup>

B b A b B b A b B b A b B b A b C c B c



# Mulher Rendeira

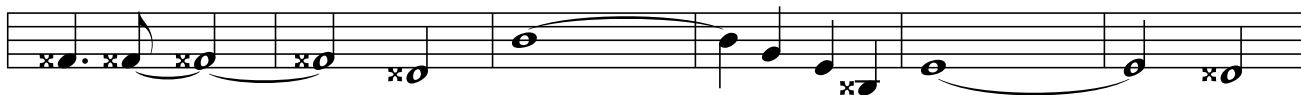
15

Aus Brasilien

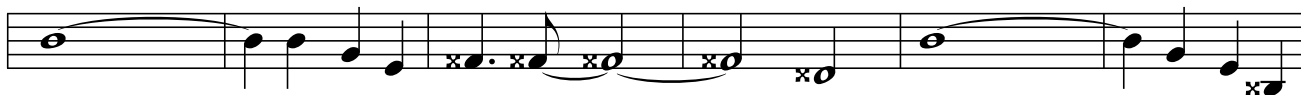
Bearb. & Griffschr.: Michael Rettig



B b b A b   B b b A b   B b b A b   B b b B<sup>b</sup>   B b b A b   B b b A b



C c c   B c   C c c B b   B b b A b   B b b C c   B b b A b   B b b B b



B b b A b   B b b A b   C c c   B c   C c c B b   B b b A b   B b b C c

# Klappdans

Volkstanz aus Schweden

Bearb. & Griffschr.: Michael Rettig



B b A b B b A b B  $\flat$  B B B  $\flat$  B  $\flat$  B B B b A b

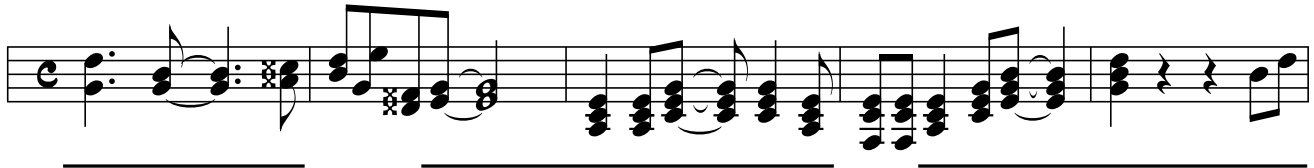


B b A b A b B b B  $\flat$  B B B B  $\flat$  B B  $\flat$  B  $\flat$  B B  $\flat$  B  $\flat$  B B B f a F A

# Banana Boat Song

Traditional aus Jamaika

Bearb. & Griffschr.: Michael Rettig



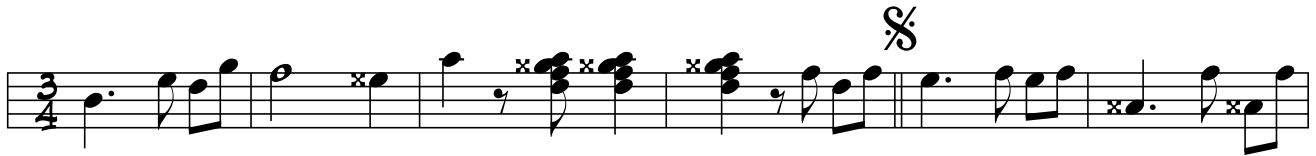
B b b A b b B b b A b b B b b A b b B b b A b b

# Reine de Musette

## Valse Musette

Komp.: Jean Peyronnin

Bearb. & Griffschr.: Michael Rettig



b B      b B      b B      b B      B b b      A b b



B b b      A b b      B b b      A b b      A b b      B b b



A b b      B b b      A b b      B b b      A b b      B b b



B b b      A b b      B b b      A b b      B b b      A b b